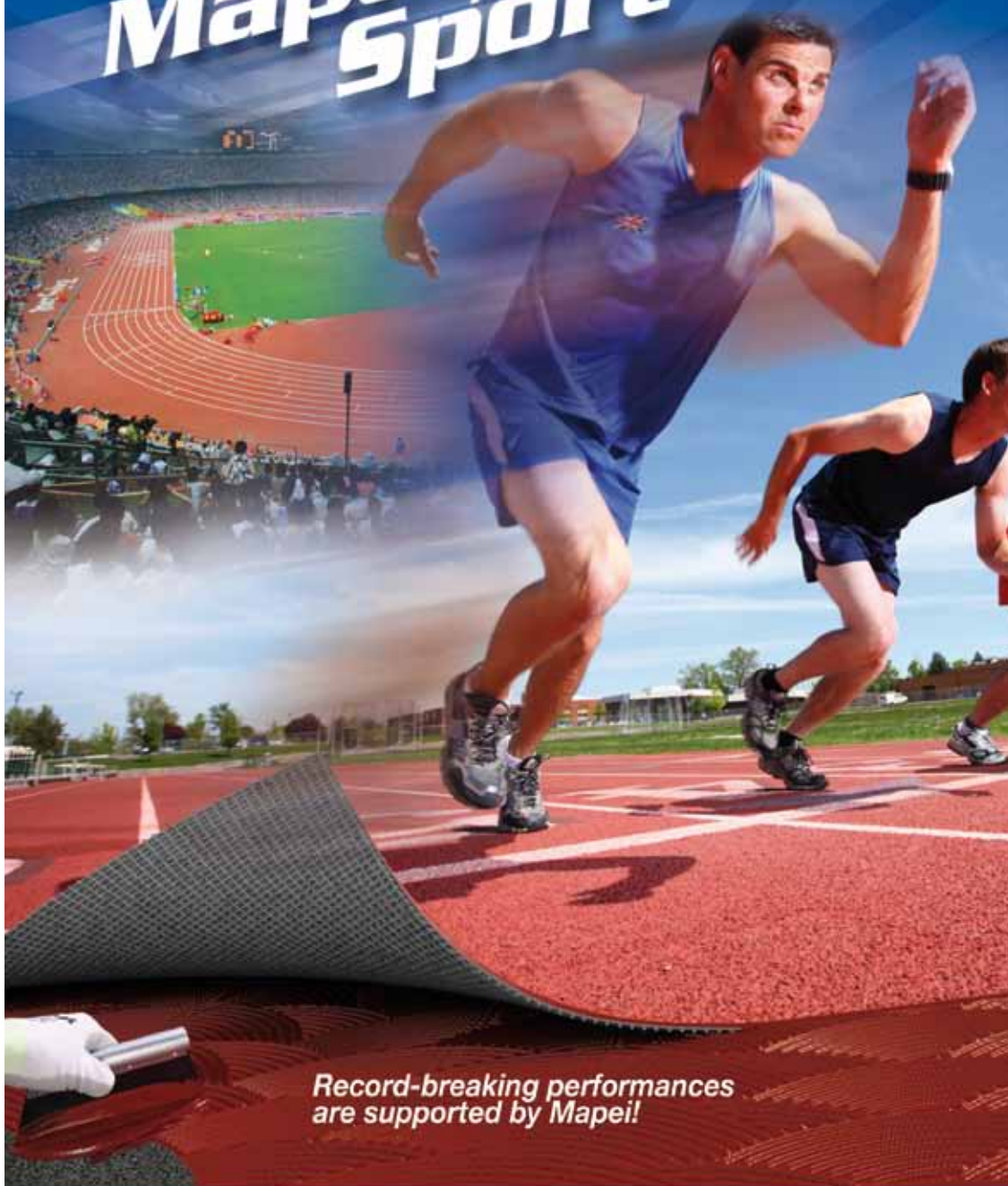


# Mapei for Sport



*Record-breaking performances  
are supported by Mapei!*



## HEADQUARTERS

**MAPEI SpA**

Via Cafiero, 22 - 20158 Milan

Tel. +39-02-37673.1

Fax +39-02-37673.214

Internet: [www.mapei.com](http://www.mapei.com)

E-mail: [mapei@mapei.it](mailto:mapei@mapei.it)

## UK

**Mapei UK Ltd**

Mapei House, Steel Park Road, Halesowen B62 8HD

Tel. +44 121 508 6970

Fax +44 121 508 6960

Internet: [www.mapei.co.uk](http://www.mapei.co.uk)

E-mail: [info@mapei.co.uk](mailto:info@mapei.co.uk)

# Mapei

## and Sports Venues around the World



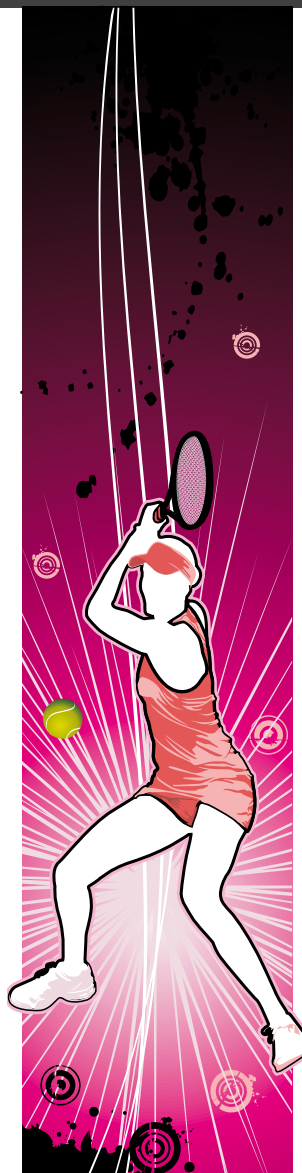
athletics  
tracks



indoor  
sports floors



football  
pitches



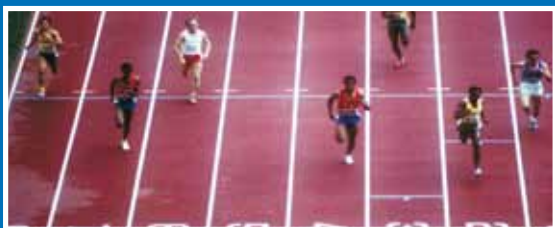
tennis  
courts



swimming pools



# Our VICTORIES



**Montreal 1976**



**Moscow 1980**



**Barcelona 1992**



**Atlanta 1996**



**Sydney 2000**



**Athens 2004**



**Beijing 2008**

Sports pitches are not only used by professional athletes, they have also recently become an integral part of our day to day lives, and not only in hotels and sports centres, but also in public and private structures.

**MAPEI HAS SUPPLIED AND STILL SUPPLIES PRODUCTS AND SYSTEMS FOR LAYING INDOOR AND OUTDOOR SPORTS AND PLAYING SURFACES, SYNTHETIC TURF PITCHES, TENNIS COURTS AND SWIMMING POOLS.**

# MAPEI solutions for Athletics Tracks



**OLYMPIC STADIUM - Beijing - China**



**OLYMPIC STADIUM**  
Nishishina - Japan



**OLYMPIC STADIUM**  
Seoul - South Korea

For athletics tracks made from rolls of synthetic rubber you should use polyurethane adhesives capable of forming a good bond with substrate, normally comprising a layer of bitumen cementitious conglomerate.

Mapei has developed special adhesives for this type of application: **ADESILEX G12**, **ADESILEX G19** and **ADESILEX G20**, used to install a number of athletics tracks, built for the occasion of various Olympic Games held in the past in co-operation with MONDO.

These adhesives bond perfectly to both the bitumen substrate and the synthetic rubber covering, and at the same time offer excellent resistance to the tangential stresses transmitted to the underlying substrate during races, and so help athletes to reach optimum performance levels.



**CIVIL ARENA**  
Milan - Italy



# MAPEI solutions for Indoor Sports Floors



**TUDOR GRANGE LEISURE CENTRE – Solihull - UK**



**MUNICIPAL GYMNASIUM**  
Gdansk Orunia – Poland



**CORPORATE GYMNASIUM**  
Milan - Italy

Mapei has always been a trusted supplier of sound, long-lasting laying systems for sports floors in gyms, schools, fitness centres and sports structures.

And the Mapei Research & Development laboratory has developed specific adhesives for this type of application: **ULTRABOND ECO VS90**, **ADESILEX G19** and **ADESILEX G20**. For laying substrates directly on the ground, a common situation for gyms and school buildings, Mapei also supplies **MAPELAY**, PVC sheets reinforced with glass fibres. These waterproofing and isolating sheets form the ideal surface for laying sports floors with the adhesives above.



**MUNICIPAL GYMNASIUM**  
Lecco – Italy

# MAPEI solutions for Laying Synthetic Turf



**TERAMO STADIUM - Teramo - Italy**



**FRANCIACORTA "DANIEL BONARA" RACE TRACK - Castrezzato - Italy**

The advanced technology and in-depth research in the sports sector has led to a number of companies offering a solid, concrete alternative to natural grass sports surfaces: synthetic turf. Technical innovation to combat the inconveniences caused by atmospheric conditions during the winter, reduce maintenance costs and to avoid lengthy down times of the sports pitches, a great help for the youth and amateur football sector.

FIFA and UEFA have been involved in this project for a number of years and even laid down a set of dedicated regulations in March 2006.

The Italian Amateur Soccer Association also readily accepted this new approach, offering themselves as pioneers for this innovative surface, and is the only authorised organisation in Italy to issue a seal of approval and certification of synthetic turf sports fields for competitive and amateur activities.

Mapei also offers a complete range of products for sports and playing fields in synthetic turf.

**ULTRABOND TURF TAPE 100:** jointing strip for fixing rolls of synthetic turf in place for various sporting disciplines.

**ULTRABOND TURF EP 2K:** two-component epoxy-polyurethane adhesive.

**ULTRABOND TURF PU 2K:** two-component, anti-allergenic, water and solvent-free polyurethane adhesive, particularly suitable for bonding at low temperatures.

**ULTRABOND TURF PU 2K RAPID:** two-component, anti-allergenic, water and solvent-free, quick-setting polyurethane adhesive, particularly suitable for bonding at low temperatures.

**ULTRABOND TURF PU 1K:** one-component, ready-to-use, anti-allergenic polyurethane adhesive, particularly suitable for bonding at low temperatures.



**"UNIONE CAPITOLINA" RUGBY PITCH Rome - Italy**



**DEBRECEN SOCCER PITCH Hungary**



# MAPEI solutions for Tennis Courts and Multi-sports Areas



**"VAVASSORI" TENNIS ACADEMY**  
Palazzolo sull'Oglio - Italy



**DON BOSCO ORATORY**  
Lissone - Italy

Mapei offers the **MAPECOAT TNS** system for indoor and outdoor tennis courts, a coloured acrylic resin coating material in water dispersion with selected fillers, applicable on surfaces which have already been painted and on new surfaces which have yet to be painted. **MAPECOAT TNS** coats the surface with a relatively soft, comfortable layer which, at the same time, is flexible and offers excellent performance: in fact, balls bounce perfectly to guarantee quick, spectacular matches, while changes in direction when running are sure and accurate, in that **MAPECOAT TNS** offers an excellent balance between friction and sliding.

# MAPEI solutions for Swimming Pools



**SINGAPORE SPORTS SCHOOL – Singapore**



**MUNICIPAL SWIMMING POOL**  
Veľký Meder – Slovak Republic



**GOUDI OLYMPIC COMPLEX**  
Athens – Greece

Mapei is the world's leading company for the production of products for the building industry, and has more than ten years experience all around the globe in both new swimming pools and those requiring repair. In fact, since the 1950's, Mapei products have been used to create many of the swimming pools used during the Olympic Games and for important international meets, and also for auxiliary structures used for reception areas for athletes and spectators.

And Mapei offers a complete range of products for this sector: for building and waterproofing reinforced concrete structures, flexible paint for coating swimming pools, special adhesives for laying ceramic tiles and glass mosaic, mortar for grouting joints and sealants for expansion joints.



**CLISSOLD LEISURE CENTRE**  
London - UK